



Information Brochure

MITTM

MARATHWADA INSTITUTE OF TECHNOLOGY POLYTECHNIC, ROTEGAON

Tq:Vaijapur, Dist:Aurangabad

Recognized by Govt. of Maharashtra
Approved by AICTE, New Delhi, Affiliate to MSBTE, Mumbai.





ABOUT MIT

Gramaudyogik Shikshan Mandal (GSM), Aurangabad, Maharashtra, India is the parent Trust established in 1975 under Bombay Public Trust Act and also registered under Society Registration Act. Over last four decades, GSM has established 20 Institutes and Centers of Excellence developed in different fields of Engineering and Technology. GSM has grown organically in three important provinces of India, viz. Maharashtra, Delhi and Uttar Pradesh. More than 12000 full time students are on different campuses from primary to post graduate education and vocational training.

GSM through its premier institutes referred as MIT, offers wide range of programmes for graduation level in faculty of –agriculture, engineering & technology, information technology, architecture, food technology, health sciences and nursing; for post-graduation programmes in food processing technology, engineering & technology, management, and architecture; for vocational level - polytechnic, vocational programmes, industrial skill set programs and technical school level programmes.

GSM has developed state of the art infrastructure, computer centers, learning aids and research laboratories at each local on and supports it by qualified and dedicated staff members. We are proud of being recognized as students centric and faculty driven organization. More than 15000 alumni are spread out across the globe and performing well in different walks of life. They are the real brand ambassadors of MIT, as their success reflects contribution of their education to their career and life.

GSM has been continuously encouraging its institutes to create collaborative environments for knowledge exchange by developing linkages between industries and other organizations. MIT has been a pioneer in accomplishing this purpose and has successfully established mutually beneficial, triangular partnership among academic institutions, industries and government organizations. Such collaborative approach has enabled a trailblazer in finding solutions to live problems from industries and pave a way for research projects. MIT has been associated with hundreds of companies for imparting students training and placements.

VISION

“Quest for Excellence” in pedagogy

Human beings are evolving and a key enabler of this evolutionary process is knowledge which is helping us demystify and understand the nature. MIT treats education as a continuous process of human development, aptly represented by its vision statement of “Quest for Excellence” in pedagogy



MISSION

We are committed to provide education and training in Architecture, Engineering, Management, Agriculture, Technology, Medicine and Paramedical spheres to enable aspiring students to develop their fullest potential in their chosen areas through:

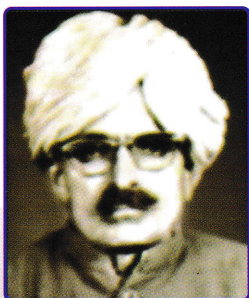
- Structured programs evolving with the times
- Offering opportunities to go beyond prescribed curriculum
- Collaboration and cooperation with industry and institutions
- Employee empowerment at all levels
- Innovation, incubation and entrepreneurship support
- Dedicated, experienced and well qualified faculty
- State of the art laboratories & libraries
- Well-appointed classrooms & infrastructure
- Relevant research & development program

OBJECTIVE

- To help students identify and meet academic and career objectives
- To offer educational and training programs to strengthen basic foundation and help develop in-depth knowledge and requisite skills
- To work with students to develop competencies required to accept global challenges and meet and exceed requirements of the industry
- To offer continuous training opportunities to employees to excel in their sphere of activity
- To offer conducive environment for employees to develop entrepreneurial spirit and sense of ownership
- To identify, review and continually enhance the key performance parameters consistent with the vision and mission

LOCATION

The Institute, MIT Rotegaon is on Aurangabad-Nashik state highway 70Km from Aurangabad and 3Km from Vijapur. Several S.T. buses play on this route. The Institute is just 1/2 Km from Rotegaon railway station on Aurangabad-Manmad railway line.



Late Shri. Anandraoji Deshmukh

“Gramaudyogik Shikshan Mandal (GSM)” was established by the renowned freedom fighter and visionary Late Shri Anandraoji Deshmukh. The year was 1975, and GSM's focus was on imparting education (Shikshan) particularly in science and technology (Audyogik) at village (Gram) level in order to develop and make villages self sustainable. Visionary academicians joined hands with committed & academically inclined industrialists to create the thrust and drive the education under the umbrella of “MIT-a Group of Academic & Research Institutions”.



Prof. Dr. Y.A. Kawade

President G.S.Mandal,
Aurangabad

The Gramaudyogik Shikshan Mandal is established to create opportunities for the unprivileged and underprivileged young generation to have meaningful education and training. Answer to this is MIT. In the narrow spectrum of technical education, to create opportunities of learning may be a task of few years span in life of any individual.

However, it is a continuous, constant and lifelong process of learning in the life of an institution like MIT. To keep pace of changes in knowledge and skills, the community has to have confidence in the courses which are offered, are enjoying highest standard and lead to meaningful careers. This organization is striving for this goal. The worth of any organization depends upon what they know, rather than what they own.

To ensure this, MIT is doing its best through qualified, experienced and devoted faculty. This will infuse success into a specific program and also enrich its academic level within the hierarchy from entry level to final stage.

This organization is slowly transforming itself from a teaching institution to a place of full opportunities of learning institution.

Prof. Munish Sharma

Director General



Prof. Munish Sharma is Director General of MIT Group. He spearheads MIT with Vision to impart enterprising flavor to MIT Teaching and Research involving the students, Staff and Alumni. In particular, Prof. Sharma spearheads strategies and initiatives to promote industry and academia collaboration. To nurture talents with an entrepreneurial and global mindset a development of Center for Innovation has been created.

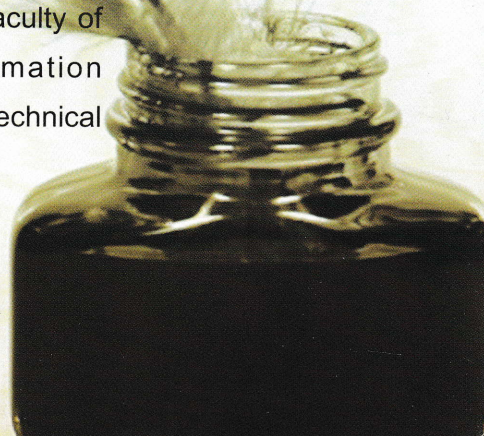
This center comprises of, "Center of Excellence (COE) instituted in different fields of engineering & technology" and "Industry Institute Interaction Cell". This cell works in association with twenty knowledge partners from industries & corporate sector and more than 250 industries associates. The corporate members have also signed MOU for imparting knowledge about latest trends in technical & professional education through the concept of Finishing School. Prior to Director General in 2008, Prof. Sharma held the position of Director (Planning), with focus in expanding the growth of MIT in India and was responsible for planning, designing, erection & commissioning of technical institutions of G.S. Mandal, Aurangabad, Delhi and Bulandshahr.

Prof. Sharma obtained his Post Graduation in Civil Engineering. Prof. Sharma started his career as a consultant in the field of valuation as an expert appraiser of plant & machinery and carried out several valuation assignments for public sector undertakings, corporate sector, and private sector for various purposes.

Under his able leadership MIT has developed strong visibility amongst stakeholders, more than 12000 full time and 2000 part time students are taking education from primary to post graduation. MIT offers wide range of courses in Faculty of Engineering & Technology /Management/ Architecture /Information Technology/Science/Nursing, Polytechnic, Industrial training Center and Technical Schools.

munish.sharma@mit.asia

+91 - 240 - 2375100, 2375116





Prof.M.R.Vaidya

Principal

My Dear Students, I feel honored and proud to welcome you to our distinguished Institute MIT Polytechnic Rotegeon.

MIT strives for eternal values of trust, honesty, and obedience by inculcating the Educational culture. We as MIT families believe that the path to success lies in doing hard work while accepting challenges as opportunities for growth. Our Institution inculcates the human values amongst the students enabling them to overcome obstacles in the journey of their professional lives with dignity and poise.

To achieve our objectives we have a well-established infrastructure, equipped laboratories, rich library and dedicated staff for maintaining high standards in the overall performance. A wide range of co-curricular and extracurricular activities organized refines the students' spirit of succeeding in today's competitive environment.

We at MIT Rotegeon work for the overall personal & intellectual development of the students of rural area which will help to uplift their own as well as the villages to which they belong. The social responsibility to develop the rural areas, MIT is committed to produce such engineers who are ready to face all the challenges which can help for the rural development.

I welcome you to the family of MIT with the assurance that the courses chosen by you will lead to a rewarding career. Congratulation! You have just taken your first step towards success.

I welcome you all once again as "MITian".

With best wishes!

Madhusudan.vaidya@mit.asia

+91-02436-204035

DIPLOMA COURSES OFFERED

| Sr.No. | Courses | Intake |
|--------|---|--------|
| 1. | Civil Engineering | 60 |
| 2. | Computer Engineering | 60 |
| 3. | Electronics & Telecommunication Engineering | 60 |
| 4. | Mechanical Engineering | 60 |

ELIGIBILITY CRITERIA

Eligibility criteria for Maharashtra State/ Outside Maharashtra State / Jammu & Kashmir Migrant / Government of India Nominees / Candidate for admission to the post SSC First year of diploma courses in Engineering / Technology:

1. For First Year

- v Candidate should be an Indian National
- v Candidate should have passed the SSC (Std.X) examination of Maharashtra State Board of Secondary and its equivalent examination, with subjects Mathematics, General Science and English, with minimum 35% marks in aggregate.

2. Direct Second year

- v Candidate should be an Indian National
- v Candidate should have passed the HSC (Std.XII) examination of Maharashtra State Board of Higher Secondary Education or its equivalent examination, with subjects Mathematics, General Science and English, with minimum 35% marks in aggregate.
- v MCVC Passed with 35%
- v ITI Passed with 35%

Tuition Fees Relaxation

For SC / ST / VJNT - 100%

EBC Facility is available

For OBC-50%

For Minority -100%

Documents Required For Admission

(Original + Three Attested Xerox Copies of each of the following)

- | | |
|---------------------------------------|--|
| (a) S.S.C. Mark Sheet | (b) T.C./L.C. |
| (c) Caste Certificate (if applicable) | (d) Non-Creamy layer Certificate (if applicable) |
| (e) Two Passport size color photo | |

EQUIPPED LABORATORIES

1. CIVIL ENGINEERING

1. Public Health Engineering Lab
2. Engineering Mechanics Lab
3. Surveying Lab
4. Concrete Technology Lab
5. Strength of Materials Lab
6. Geotechnical Engineering Lab
7. Computer Aided Design Lab
8. Hydraulics Engineering Lab



Career Opportunities in Civil Engineering.

- | | |
|--------------------------------------|-------------------------------|
| 1. Business in Construction Industry | 2. Surveying Consultancy |
| 3. Structural Design Engineer | 4. Site Engineer |
| 5. Govt. Services | 6. Industrial Constructions |
| 7. Road Constructions | 8. Testing and Environmental |
| 9. Estimating and Costing | 10. Geotechnical Engineering. |

2. ELECTRONICS & TELE-COMMUNICATIONENGINEERING

1. Analog Electronics Lab
2. Communication Lab
3. Digital & Microcontroller Lab
4. Instrumentation & Control Lab
5. Electronics workshop
6. Advance Communication Lab
7. Electrical Engineering Lab



Career Opportunities in Electronics & Tele-communication Engineering

1. Telecom Industries
2. Embedded System Design.
3. Servicing & Maintenance
4. Software Industry
5. Research opportunities in industry



3. COMPUTER ENGINEERING

1. System Programming Lab
2. Computer Programming Lab
3. Computer Software Lab
4. Computer Fundamental Lab
5. Multimedia Lab
6. Computer Architecture & Maintenance Lab



Career Opportunities in Computer Engineering.

1. Software professional, Web Designer & Developers.
2. Project managers, freelancers, software developers, IT security engineers.
3. Database Administrator.
4. Programmer, System Developer, System Analyst.

4. MECHANICAL ENGINEERING

1. Thermal Engineering Lab
2. Power Engineering Lab
3. Fluid Mechanics Lab
4. Industrial Fluid Power Lab
5. Measurement & control Lab
6. Metrology & Quality Control Lab
7. Computer Aided Design Lab
8. Theory of Machine Lab.
9. Automobile Lab
10. Mechanical Workshop



11. Design Lab.

Basic Science Laboratories.

1. Physics Lab.
2. Chemistry Lab
3. Language Lab

Career Opportunities in Mechanical Engineering.

1. Manufacturing Industries.
2. Automobile Industries
3. Product Design & Analysis.
4. Quality Control
5. Power Plant Engineering.
6. Self-Employment.
7. Small Scale Industry
8. Software Industries
9. Aircraft Industry.
10. Ordnance Factory

TRAINING AND PLACEMENT

The T&P Cell, an innovative and unique concept which has been set up with the objective of bringing industry and academia close to each other. This is a cell which bridges the gap between faculty, students and industry. In addition to organizing management development programmes, consultancy, research and in-company training programmes, industry visits, guest lectures, CEO forums, quizzes, actively involves students in various activities to develop personal and professional skills.

T&P Cell also helps students by counseling them to choose an appropriate career depending on their aptitude and interest. It helps to find the student appropriate summer project and final placements. Students actively participate in formulating strategies for various events, industry summer and final placements. They then closely work in securing placement for all students. Placement is on top agenda at Campus for all. The entire gamuts of academic activities are oriented to provide the best possible placement to the students in leading corporate houses / MNCs. MIT has been consistently striving to provide best quality placements to all the students by the concerted efforts of the members of the placement committee, faculty members and alumni. The training and placement cell has developed very strong relations with the doyens of the corporate world to facilitate the students in getting the real life exposure to the corporate world. This cell has been actively organizing various events to facilitate the summer internship and the final placement of the students in various leading organizations.

The T&P Cell has a much focused approach on counseling and guiding each and every student so as to help him/her in getting the best of the companies according to their career aspirations.

Student Selected In Campus Interview

With from Left

Prof. S.N Pathak,

Prof. U.H.Chavan,

Principal Prof.M.R.Vaidya,

Prof. A.S.Nagrik,

Prof.V.G.Talekar,

Prof. Miss. V.A.Dhopte



THE STUDENT COUNCIL

The council aims at the versatile development and betterment of students. The student's council organises various events which provides a platform for exploring technical, cultural and sports talents in students.

(The Student council With From Left Principal Prof. M.R. Vaidya, DTE Joint Director Dr.

Shivankar Sir, President G.S Manadal's Prof.Dr.Y.A.Kawade Sir, Prof. V VChuodhary)



MSBTE RESULT

Even being rural Institute the result of the MSBTE exam is very positive and encouraging. 100% result of third year of all branches since July 2009 and all students passed in first class and more than 50% students passes in distinction.

AWARDS / EVENTS / ACHIEVEMENTS

IDESSA Winner in Wrestling, Chess, Athletics

State Level Paper Presentation Winner

Parent meet

Blood Donation Camp

Personality Development

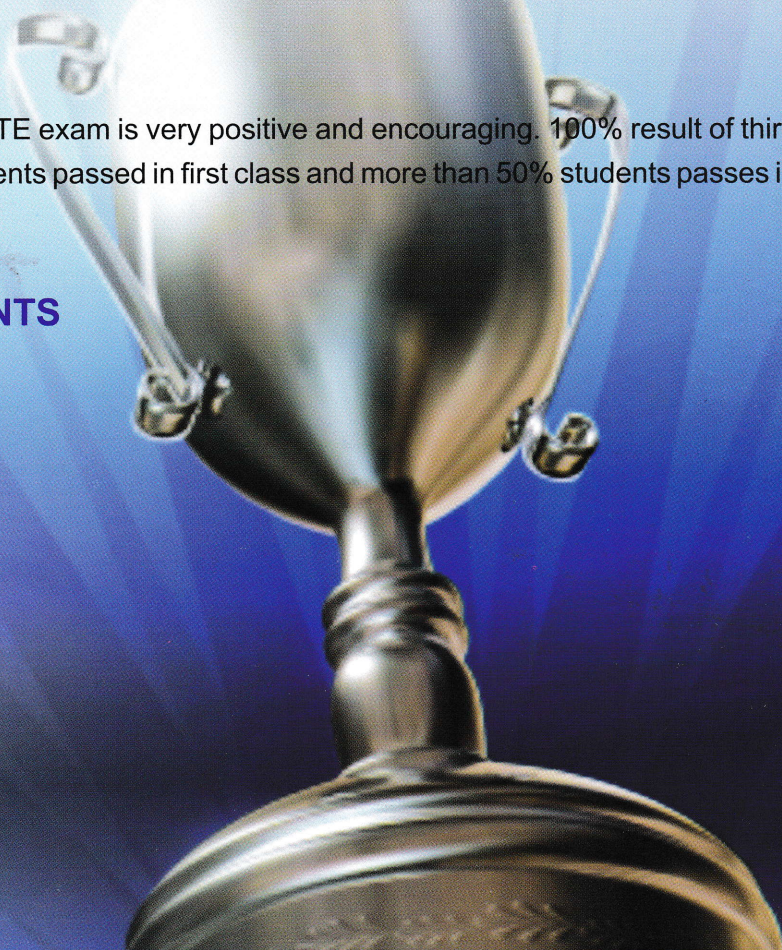
Tree Plantation

Swatch Bharat Abhiyan

Entrepreneurship Development Program

Faculty Development Program

Expert lecture on various Topics



PARENT MEET

Regular interaction with the parents of FY & Higher class students is achieved through Parents meets organized in each semester of academic year. Institute considers the suggestions, grievances put forward by the Parents to improve the Quality of Education in the Institute.



SPORTS ACTIVITIES

In IEDSSA our students participate in various sports competitions like cricket, volley ball, table tennis, badminton, basketball, football, kabaddi, kho-kho, power lifting and athletics. The winners are appreciated and awarded by MSBTE and Institute.



Designed by Vectrexy

BEYOND ACADEMICS

Our objective is to build engineers who have an impressive personality, right attitude and strong communication skills, not to mention innovative and creative thinking. Thus we give due attention to not just academics, but all the other things that help them in overall development of student personality. Students are motivated to take part in co-curricular/extra-curricular activities in order to enhance their existing skill and develop new ones.





FACILITIES

THE CENTRAL LIBRARY

To enhance knowledge and to install thirst for learning among students, which will enable them to develop an integrated personality and motivate them for valuable contribution to the society in future. The Institute has rich learning resources in library. For the students & staff book bank facility is available also every Department have its own Departmental library.

CENTRAL COMPUTING FACILITY& DIGITAL LIBRARY.

The aim of establishing the central computing infrastructure is to provide computing & internet facility to the whole campus and to support students in their project work, seminars & presentations. It is responsible for the campus Data maintenance, ERP record management, preparing instructional material CDs & DVDs and also Desktop Publishing.

HOSTELS

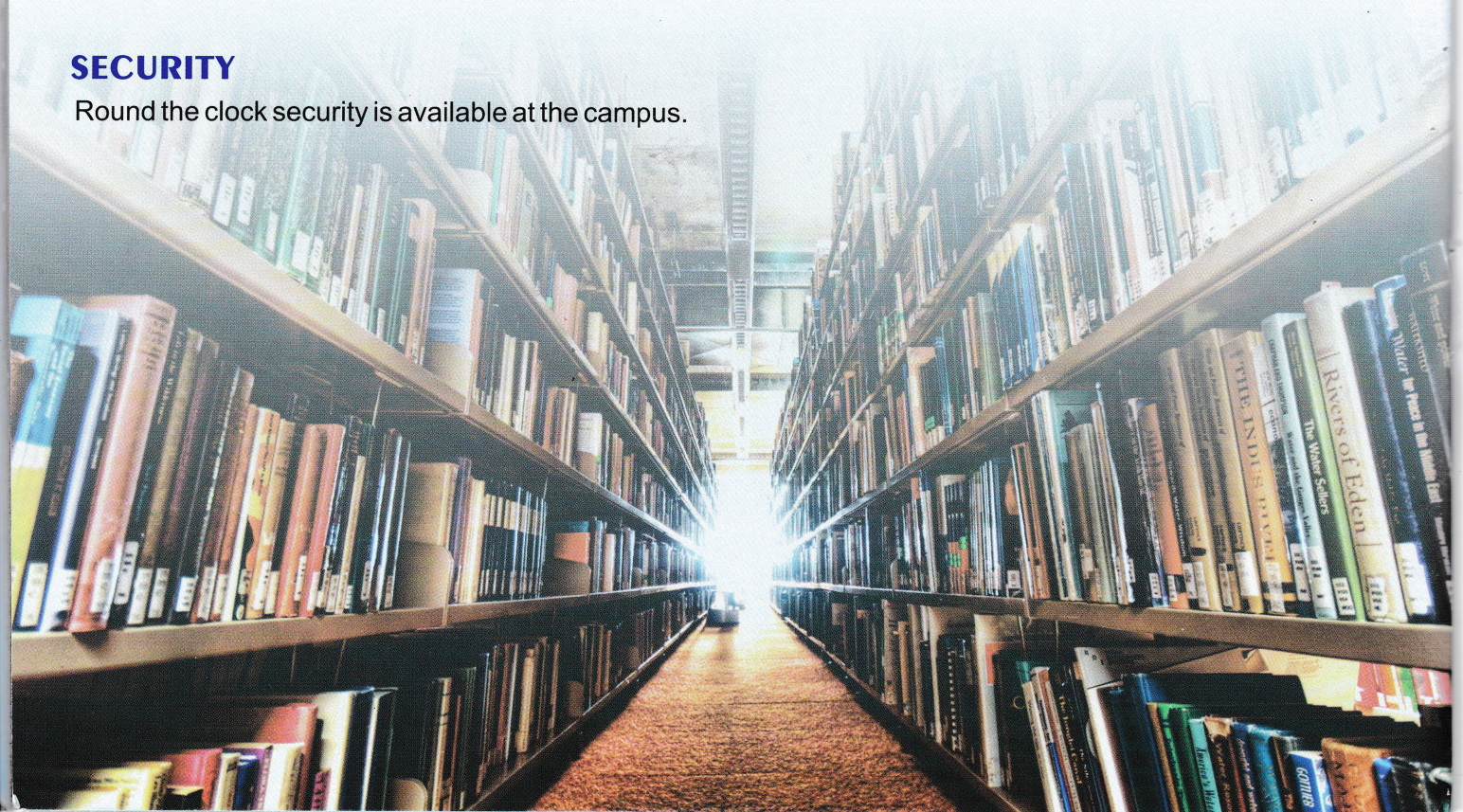
Hostel facility is provided for boys. Amenities such as indoor games room and dining hall and a mess are facilitated for hostel. 24/7 basis power supply is available.

CANTEEN

Canteen facility available in the campus which serves quality food.

SECURITY

Round the clock security is available at the campus.



RAGGING FREE INSTITUTE.

Every Institute has constituted and formed Anti Ragging Committee as per the AICTE directives and regulations vide its circular F. No. 37-3/legal/AICTE/2009 dated 1st July 2009. The main objectives are to build a Ragging Free Environment in the Institution and to enforce the directives given by the Govt. / Competent Authority for prevention of ragging incidences on the campus

Actions to be taken against students for indulging and abetting ragging in technical institutions

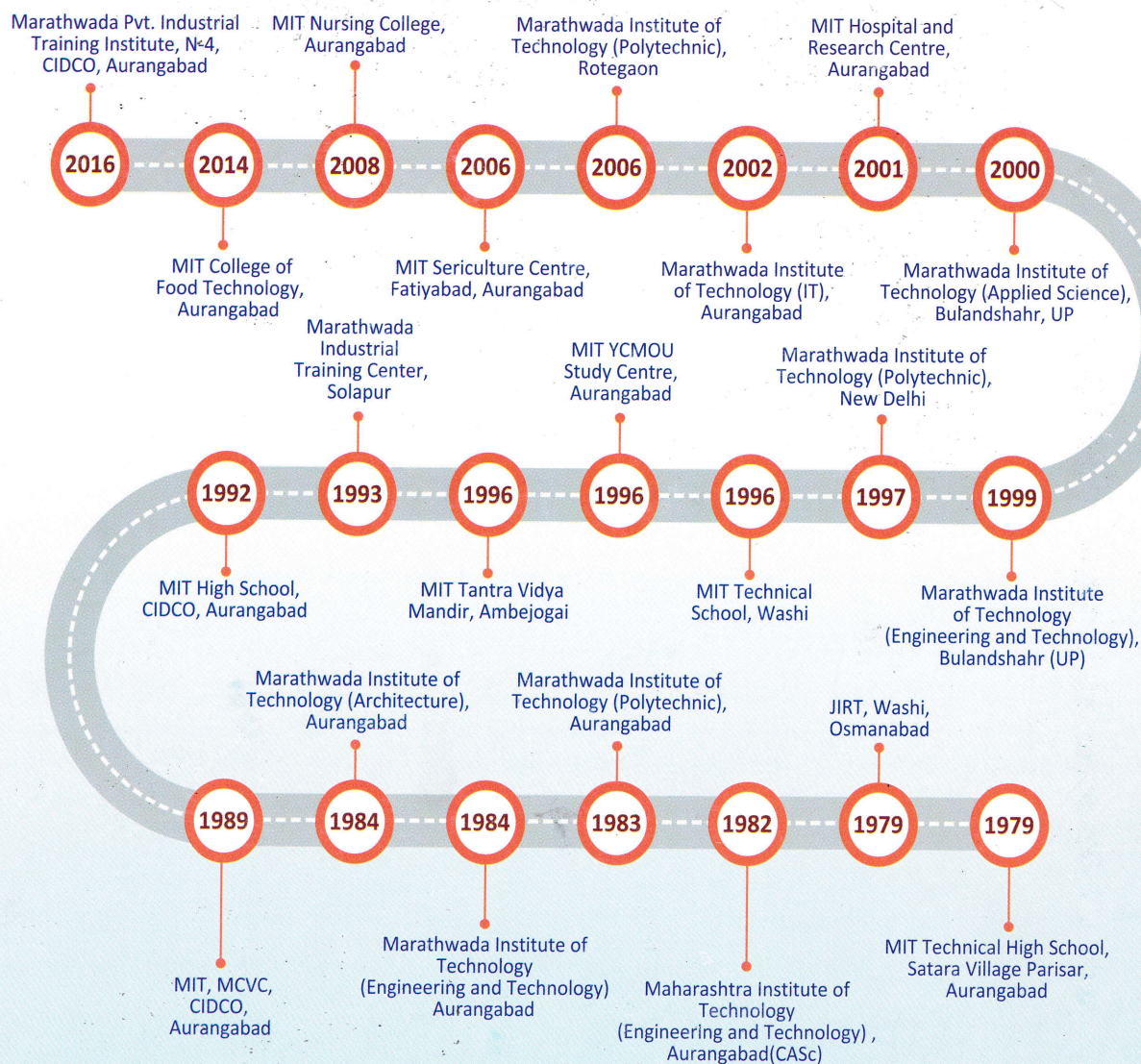
1. Every single incident of ragging a First Information Report (FIR) must be filed without exception by the institutional authorities with the local police authorities.
2. The Anti-Ragging Committee of the institution shall take an appropriate decision, with regard to punishment or otherwise, depending on the facts of each incident of ragging and nature and gravity of the incident of ragging.
3. Depending upon the nature and gravity of the offence as established the possible punishments for those found guilty of ragging at the institution level shall be any one or any combination of the following:-
 - (i) Cancellation of admission.
 - (ii) Suspension from attending classes.
 - (iii) Withholding/withdrawing scholarship/fellowship and other benefits.
 - (iv) Debarring from appearing in any test/examination or other evaluation process.
 - (v) Withholding results.

TEACHING & NON-TEACHING STAFF



Gramodyogik Shikshan Mandal's

MIT TIMELINE



G.S.Mandal's

MARATHWADA INSTITUTE OF TECHNOLOGY, ROTEAGAON

Near Railway Station, At Post Roteagaon, Tq.Vaijapur, Dist.Aurangabad

Phone No-02436-204035, Fax No.02436-224035

Web: <http://rotegaon.mit.asia> Email: madhusudan.vaidya@mit.asia